

# BOWLEX JAPAN 2019

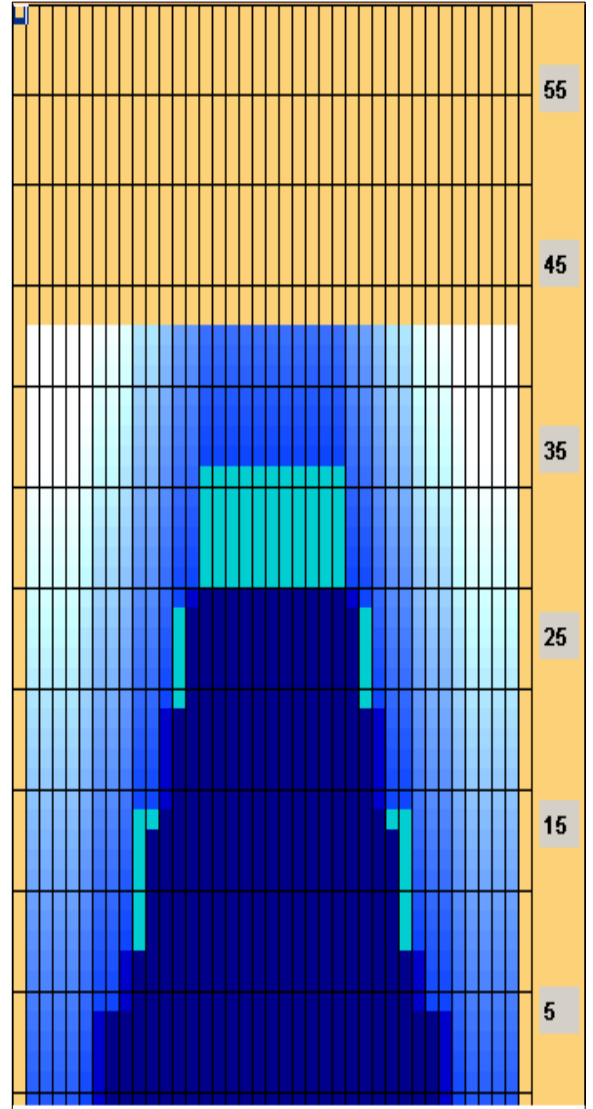


**Oil Pattern Distance:** 43 Feet      **Reverse Brush Drop:** 35 Feet      **Oil Per Board:** 50 uL  
**Forward Oil Total:** 15.95 mL      **Reverse Oil Total:** 9.9 mL      **Volume Oil Total:** 25.85 mL  
**Forward Boards Crossed:** 319 Boards      **Reverse Boards Crossed:** 198 Boards      **Total Boards Crossed:** 517 Boards

	Start	Stop	Loads	Speed	Crossed	Start	End	Feet	T.Oil
1	2L	2R	2	14	74	0.0	1.9	1.9	3700
2	6L	6R	1	18	29	1.9	4.4	2.5	1450
3	8L	8R	2	18	50	4.4	9.5	5.1	2500
4	10L	10R	4	18	84	9.5	19.7	10.2	4200
5	13L	13R	4	18	60	19.7	29.9	10.2	3000
6	15L	15R	2	22	22	29.9	36.1	6.2	1100
7	2L	2R	0	26	0	36.1	43.0	6.9	0

Conditioner:  
 Type In or Select One  
  
 TransferType:  
 Type In or Select One

- Forward
- Reverse
- Combined
- Buff



Navigation: Forward Reverse More

	Start	Stop	Loads	Speed	Crossed	Start	End	Feet	T.Oil
1	2L	2R	0	30	0	43.0	30.0	-13.0	0
2	14L	14R	2	22	26	30.0	23.8	-6.2	1300
3	12L	12R	2	22	34	23.8	17.6	-6.2	1700
4	11L	11R	2	18	38	17.6	12.5	-5.1	1900
5	9L	9R	2	14	46	12.5	8.6	-3.9	2300
6	7L	7R	2	14	54	8.6	4.7	-3.9	2700
7	2L	2R	0	10	0	4.7	0.0	-4.7	0

Navigation: Forward Reverse More

Item	3L-7L:18L-18R	8L-12L:18L-18R	13L-17L:18L-18R	18L-18R:17R-13R	18L-18R:12R-8R	18L-18R:7R-3R
Description	Outside Track:Middle	Middle Track:Middle	Inside Track:Middle	Middle: Inside Track	Middle:Middle Track	Middle:Outside Track
Track Zone Ratio	8.93	2.05	1.05	1.05	2.05	8.93

